

# BURZIO.

**A pair of North Italian carved giltwood twin light wall appliques, each with backplate with flaming urn above branches issuing from winged grotesque sea monster, gilt metal scrolling branches ending in a wooden candle holder. Attributed to the carver Niccolò Lagaggio.**

**Genoa, first half XVIII Century**

Height: 16,53 in. (42 cm)

Wight: 12 in. (30 cm)

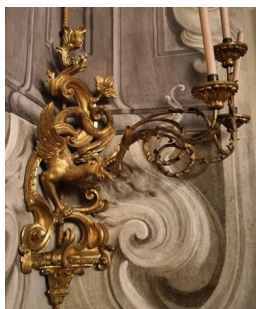
Depth: 9 in. (23 cm)



## **Comparative example:**

A Corner wall lamp, (fig.1) sculpted and carved wood and gilt metal. In September 1736 Maddalena Doria Spinola soldered this lamp to the carver Lagaggio, one of a set of four which were gilded by Giovanni Battista Scatello and Giovanni Agostino Reborra. (Genoa, National Gallery of Plazzo Spinola).

Lume parietale ad angolo, legno scolpito, intagliato e ferro dorato. Nel Settembre 1736 Maddalena Doria Spinola saldó all'intagliatore Lagaggio questo lume facente parte di una serie di quattro che vennero.( Genova, galleria Nazionale di Plazzo Spinola).



*(fig.1) Niccolò Lagaggio intagliatore e Valle Antonio Doratore, Palazzo Spinola 1734-36*